

Albert Park Bristol BS6 5NE • Offers In Excess Of £650,000



4 BEDROOMS • 4 BATHROOMS • 4 RECEPTIONS • TENURE: Freehold

**CASH BUYERS ONLY
CALLING ALL INVESTORS
30K+ PER ANNUM INCOME
X4 ONE BEDROOM APARTMENTS
GARDEN APARTMENT
OFF STREET PARKING
SOUGHT AFTER LOCATION**

CASH BUYERS ONLY! 33K+ PER ANNUM! Set over four floors on a sought after location in popular Montpelier and currently arranged as X4 self contained one bedroom apartments! The property comprises of an communal entrance leading to a lower ground floor garden apartment, ground floor apartment, first floor apartment and top floor apartment. Further benefits includes; Gas central heating & separate electrics per apartment, double glazing, off street parking, current rental values between £650.00PCM - £750.00PCM and NO CHAIN!

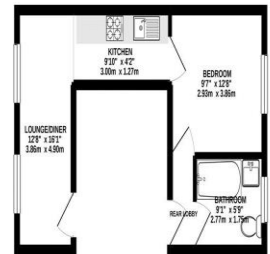
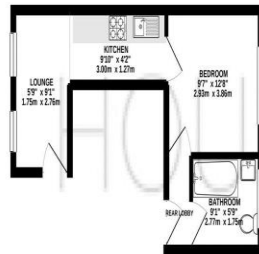
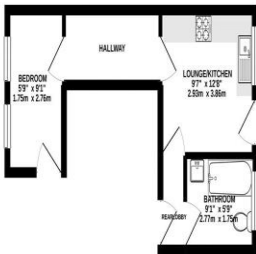


BASEMENT FLOOR - FLAT 1

GROUND FLOOR - FLAT 2

1ST FLOOR - FLAT 3

2ND FLOOR - FLAT 4



Whilst every attempt has been made to ensure the accuracy of the floorplan contained here, measurements of doors, windows, rooms and any other items are approximate and no responsibility is taken for any error, omission or mis-statement. This plan is for illustrative purposes only and should be used as such by any prospective purchaser. The services, systems and appliances shown have not been tested and no guarantee as to their operability or efficiency can be given.

Made with Metropix ©2020

Room sizes

BASEMENT FLOOR - FLAT 1

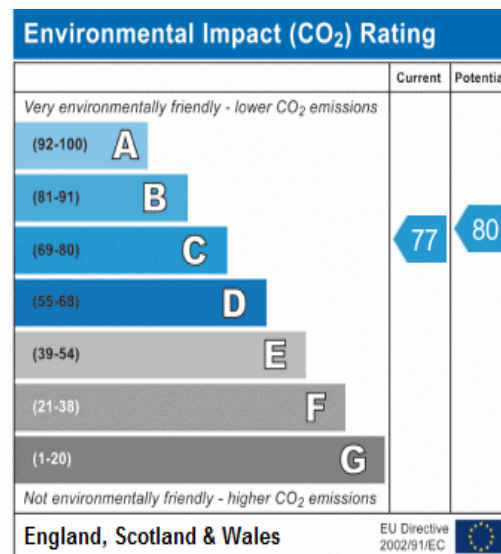
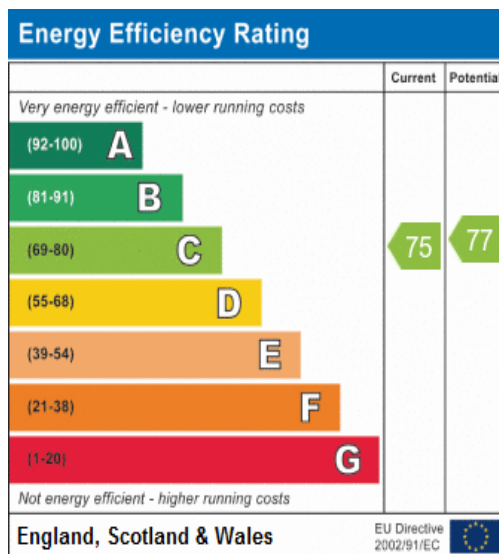
| | |
|----------------|--------------------------------|
| Bedroom | 9' 1" x 5' 9" (2.77m x 1.75m) |
| Lounge/Kitchen | 12' 8" x 9' 7" (3.86m x 2.92m) |
| Bathroom | 9' 1" x 5' 9" (2.77m x 1.75m) |

GROUND FLOOR - FLAT 2

| | |
|----------|--------------------------------|
| Lounge | 9' 1" x 5' 9" (2.77m x 1.75m) |
| Kitchen | 9' 10" x 4' 2" (2.99m x 1.27m) |
| Bedroom | 12' 8" x 9' 7" (3.86m x 2.92m) |
| Bathroom | 9' 1" x 5' 9" (2.77m x 1.75m) |

FIRST FLOOR - FLAT 3

| | |
|--------------|---------------------------------|
| Lounge/Diner | 16' 1" x 12' 8" (4.90m x 3.86m) |
| Kitchen | 9' 10" x 4' 2" (2.99m x 1.27m) |
| Bedroom | 12' 8" x 9' 7" (3.86m x 2.92m) |
| Bathroom | 9' 1" x 5' 9" (2.77m x 1.75m) |



General information

Money Laundering Regulations 2003 – Intending purchasers will be asked to produce identification documents prior to the agreement of a sale. You will be informed of acceptable documentation upon making an offer to this office.

These particulars do not constitute part or all of an offer of contract.

The measurements indicated are supplied for guidance only and as such must be considered approximate.

Potential buyers are advised to recheck the measurements before committing to any expense.

House + Co Property have not tested any equipment, fixture, fitting, apparatus or services and cannot guarantee that they are in working order.

House + Co Property have not sought to verify the legal title of the property and the buyers must obtain verification from their legal representative.

House + Co Property prepared these details for themselves in good faith and whilst believed to be correct, we give notice that none of the statements contained in these particulars for this property are to be relied upon as statements or representation of fact. Some statements are inevitably subjective, and are therefore the view of the author at the time the information was prepared. If any items are important to you, then please check with the office first, especially if you are travelling some distance to view.

Note regarding floorplan

The computer-generated floor plan is intended as a general guide to the layout and design of the property. It is not to scale and should not be relied upon for accuracy. Purchasers should satisfy themselves as to the layout of the property prior to making any decision to buy.