

Cooperage Road Redfield Bristol BS5 9RE • £995pcm

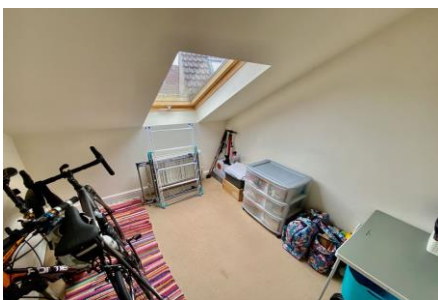


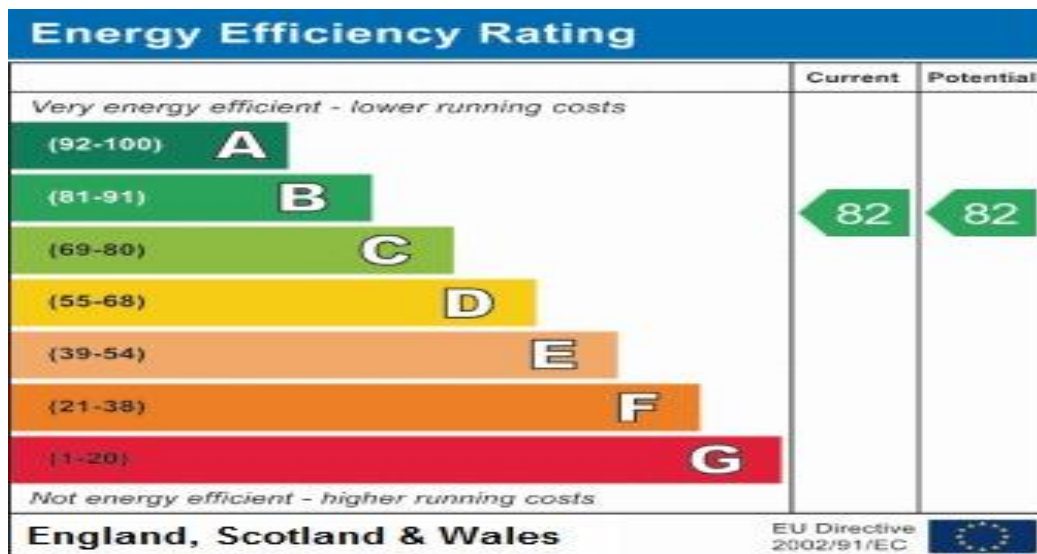
3 BEDROOMS • 1 BATHROOMS • 1 RECEPTIONS

Available 11/11/2020
Redfield Location
Allocated Parking Space
Three Bedrooms
Overlooking Netham Park

House + Co Property are delighted to present this lovely three bedroom top floor flat situated opposite and with views over Netham Park and walking distance from Redfield's Church Road. The well presented accommodation comprises entrance hallway, bathroom, two double bedrooms (master with en-suite shower room), single bedroom and open plan lounge/diner and modern kitchen. The property is offered predominantly unfurnished but includes white goods, wardrobe in main bedroom and 2x sofas in the lounge. Further benefits include gas central heating, double glazing and allocated parking space. A must view! Available from 11th November 2020.







General information

Money Laundering Regulations 2003 – Intending tenants will be asked to produce identification documents prior to the agreement of a letting. You will be informed of acceptable documentation upon making an offer to this office.

These particulars do not constitute part or all of an offer of contract.

House + Co Property have not tested any equipment, fixture, fitting, apparatus or services and cannot guarantee that they are in working order.

House + Co Property have not sought to verify the legal title of the property and the tenants must obtain verification from their legal representative.

House + Co Property prepared these details for themselves in good faith and whilst believed to be correct, we give notice that none of the statements contained in these particulars for this property are to be relied upon as statements or representation of fact. Some statements are inevitably subjective, and are therefore the view of the author at the time the information was prepared. If any items are important to you, then please check with the office first, especially if you are travelling some distance to view.

Note regarding floorplan

The computer-generated floor plan is intended as a general guide to the layout and design of the property. It is not to scale and should not be relied upon for accuracy. Tenants should satisfy themselves as to the layout of the property prior to making any decision to rent.